

Installation Instructions

SOHO Pro™ Media Panels

P2100, P3000, P4200, P6300

SOHO Pro™ Media Panels bring broadband inside the connected home. The flexible design provides a convenient, lockable and centralized location for easy installation and distribution of smart home services within residential and commercial premises.

WARNING

- **DO NOT** stretch enclosure walls or lid won't seat properly.
- **DO NOT** over-tighten mounting screws.
- **DO NOT** use mounting screws larger than #8.

On-Wall Maximum Load Ratings:

- P2100: 10kg (22lbs)
- P3000: 11kg (25lbs)
- P4200: 16kg (35lbs)



P2100



P3000



P4200



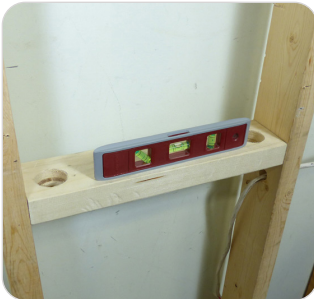
P6300

Note: Adhere to your local electrical code when installing all cabling.

1. Install horizontal joist and gang box

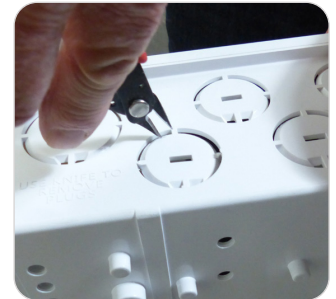
To ensure a comfortable working height it is recommended that the top of the gang box be installed 36" from the ground using a level.

Note: Leave at least a 2" buffer zone around base to keep clear from perpendicular walls.



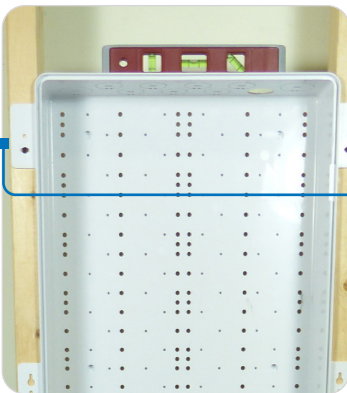
2. Remove knock outs

Prior to installation, remove the top knockouts as needed for conduit using a flush cutter tool. Pop out the caps and covers at the bottom of the enclosure by hand or with a screwdriver to install electrical boxes or additional conduit.



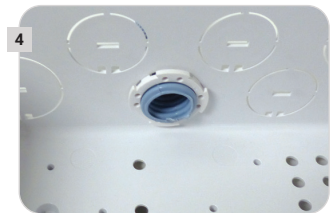
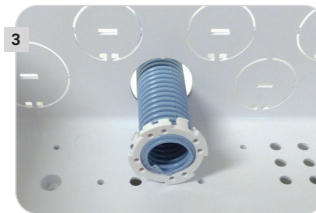
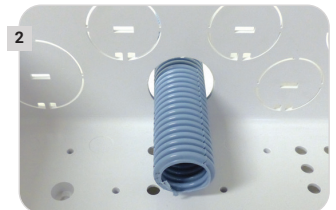
3. Install base over top of the gang box using No. 8 flat cross-head screws

Install single screw in corner flange, level, then secure with additional screws.



4. Install conduit and adapter

At this stage, connect conduit for outgoing and incoming services and secure with Primex conduit adapters.



5. Measure installation position

Measure distances from edges of enclosure to outside of adjacent studs, floor and ceiling.



6. Measure, mark, cut and mount drywall

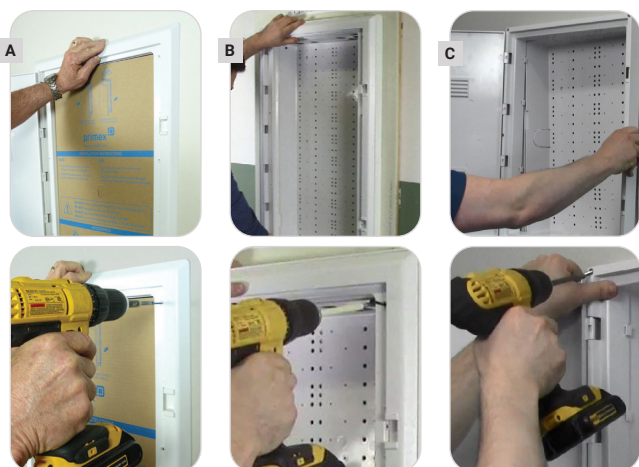
Use measurements from step 5 to mark out drywall. Cut out marked area of drywall. Fit drywall over top of the installed enclosure base and secure paintshield back in place.



7. Paint drywall and affix enclosure lid

Place paintshield, paint drywall, and install lid and frame. Media Panel options:

- A) Standard with wide lip to cover drywall cut imperfections
- B) Standard deep (frame extender) retrofit to add 1" more depth
- C) Narrow deep for shared stud, tight corners and 1" additional depth



8. Finish installation

Remove paintshield and install accessories for equipment mounting.



P3000 Shown



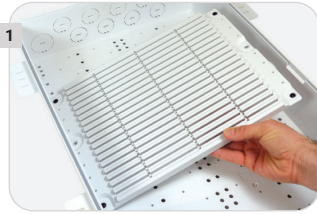
Installation Instructions

SOHO Pro™ Media Panels

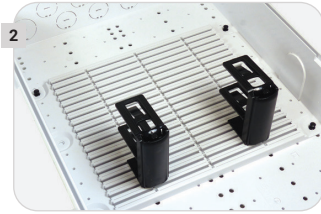
P2100, P3000, P4200, P6300 | Accessories

Rail Mounting System (RMS)

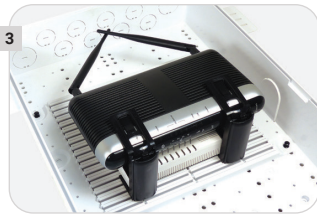
Max mounted component thickness of 3.3"



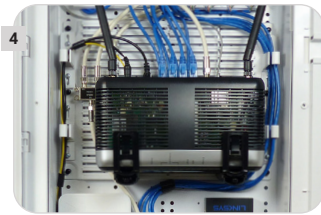
Determine placement of RMP and press pushpins to lock in place.



Slide brackets into place from the side of the mounting plate.



Place component and press bracket arm to hold securely.



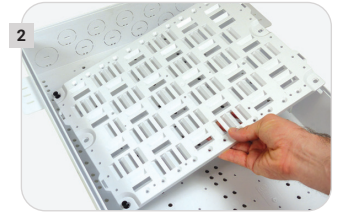
Recommended load 5lbs (2.27kg) Place in heavier equipment first.

Universal Mounting System (UMS)

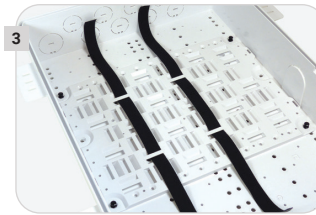
Recommended load 5lbs (2.27kg)



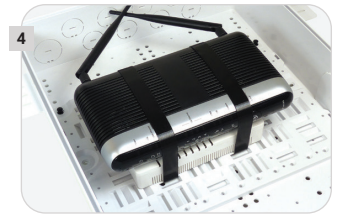
Pre-insert up to six pushpins into UMP before placement.



Determine placement of UMP and depress pushpins to lock in place.

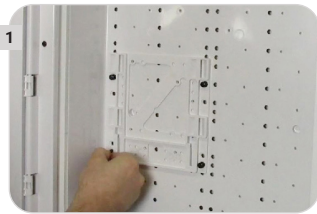


Determine placement location of component, cut tape, and thread.

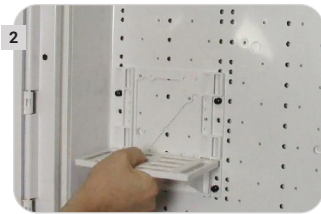


Pull tape and affix to hold and ensure component is secure.

Shelf Mounting System (SMS)



Insert push pins to affix SMS to the Media Panel.



Mount shelf into place and secure.

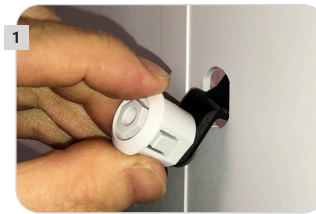


Optional mounting tape to secure hardware. (not included)



Can be installed side by side and act as a service divider.

Hex Lock



Insert hex lock with cam facing upwards.

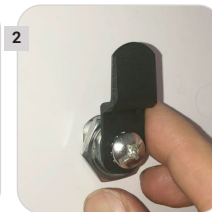


Press in.

Key Lock



Install cylinder lock.



Thread on mounting nut.



Install lock cam.



Installation Instructions

SOHO Pro™ Media Panels

P2100, P3000, P4200, P6300 | Accessories

Locks		Jacks / Wall Plates / Other	
Key Lock (1pc)	125-1073	Cat6, 110 IDC, 180° HD	125-0946-WT
Hex Lock (1pc)	125-1678	Cat6, 110 IDC, 90° HD	125-0947-WT
Mounting Systems		Cat5e, 110 IDC, 180° HD	125-0948-WT
7" RMP w/RMB2(x2), pushpins (x10)	125-1655	Cat5e, 110 IDC, 90° HD	125-0949-WT
7" RMP w/RMB(x2), pushpins (x10)	125-1656	Cat6A, 180° Tool-less, Unshielded	125-1628-WT
7" RMB w/RMK(x2), pushpins (x10)	125-1657	Cat6A, 180° Tool-less, Shielded	125-1629-WT
10" RMP w/RMB2(x4), pushpins (x10)	125-1658	Cat6A, 180° Tool-less, Un shielded	135-0351
10" RMP w/RMB(x4), pushpins (x10)	125-1659		
10" RMP w/RMB2(x2)/RMK(x2),pushpins(x10)	125-1660	3-Line RJ12 Voice Jack	125-0959-WT
Universal Mounting Plate (UMP)	125-0770	SC/APC Fiber Keystone w/Shutter	125-0908
10" UMP w/5' tape, pushpins (x10)	125-1623		
		Cat5e coupler, HD	125-1266-WT
Shelf Mounting System (Single-1/pk)	125-1541	Cat6 coupler, HD	125-1267-WT
Shelf Mounting System (Divider-2/pk)	125-1542	RG12 coupler, HD	125-1268-WT
Shelf Mounting System w/tape	125-1522		
		F-Connector Keystone	125-0961
33' Roll Of Mounting Tape	125-0779		
10' Roll Of Mounting Tape	125-1274	Blank keystone	125-0960-WT
Mounting Plate Pushpins (100/bag)	125-0829	Single-Gang Wall Plate, 1-Port	125-0957-WT
Mounting Plate Pushpins (10/bag)	125-1535	Single-Gang Wall Plate, 2-Port	125-0958-WT
		Single-Gang Wall Plate, 3-Port	125-0955-WT
Hurricane Clip (12/pk)	125-0239	Single-Gang Wall Plate, 4-Port	125-0956-WT
Fiber Transition Modules / Distribution Modules		Decorative Wall Jack, 1-Port	125-0951-WT
FTC2 - Standard	125-1778	Decorative Wall Jack, 2-Port	125-0952-WT
FTC2 - w/ SC/APC fiber adapter	125-1828	Decorative Wall Jack, 3-Port	125-0953-WT
FTC2 - w/angled shutter SC/APC adapter	125-1827	Decorative Wall Jack, 4-Port	125-0954-WT
		Decorative Wall Plate	125-0950-WT
FTO-w/1 SC/APC Adapter	125-0889		
FTO-w/Integrated Splice Tray	125-0879	Oversize Wall Plate, 1-Port, Glossy	125-1241-WT
		Oversize Wall Plate, 2-Port, Glossy	125-1236-WT
Cat6/Coax Combo Module	125-1665	Oversize Wall Plate, 3-Port, Glossy	125-1242-WT
Cat6A/Coax Combo Module	125-1666	Oversize Wall Plate, 4-Port, Glossy	125-1243-WT
Triple Play Combo Module (Cat6/Voice/Data)	125-1667	Oversize Wall Plate, 6-Port, Glossy	125-1244-WT
8-Port Cat5e Data Module	125-0986	Oversize Wall Plate, 2-Port, W/Cat6 & Coax, Textured	125-1237-WT
8-Port Cat6 Data Module	125-1035	Brushed Wall Plate	125-0978-WT
8-Port Voice RJ31x Module	125-0987		
6-Port Cat6a Data Module	125-0975	3/4"-1/2" Reducer	125-1022
8-Port Voice Cat6 w/RJ45 Module	125-0977	1"-3/4" Reducer	125-0936
1x8 Port 4 Line w/RJ45 Voice Module	125-0976		
		Flush Cutters w/4" Cable Ties (10)	125-1423
8-Port Cat6 Tool-less Gateway Module	135-0061		
Cat6 Data/Voice Tool-less Module	135-0063	Compact RJ Crimping Tool	125-1683
Network Switches / Splitters / Electrical			
PXU-1G08: 8 Unpowered Network Ports	125-1891		
PXU-1G44: 4 PoE+ Ports (60w) & 4 Unpowered Ports	125-1892		
PXU-1G80: 8 PoE+ Ports (120w)	125-1893		
2-Way Coax Splitter (horizontal)	125-1661		
4-Way Coax Splitter (vert/horiz)	125-1574		
6-Way Coax Splitter (vert/horiz)	125-1575		
8-Way Coax Splitter (vert/horiz)	125-1576		
Electrical Installation Kit	125-1355		
360° Electrical Rotating Outlet	125-1547		
3-Outlet Power Extension	135-0086		
Customer Premise Outlet (CPO4), 4-Port	125-0911		



Accessories

