

The Primex Fiber Keystone with Auto-Shutter offers easy connectivity for workstation cabling termination on single mode and multimode fiber cables.

Compatible with all standard wall plates and ideal for applications such as FTTH, it includes an auto-shutter which keeps the jack low-profile while protecting against dust and exposure to fiber signal.

### Features & Benefits

- Accommodates SC/APC or SC/UPC fiber for universal requirements
- Compatible with most patch panels, surface mount boxes and faceplates
- Auto-Shutter shields eye against exposure to light emittance and keeps dust out
- Low insertion loss
- Low back reflection loss
- Standards: UL 1863 listed, TIA-568-C.3

### Technical Specifications

Insertion Loss (db) <0.20 dB (1210nm - 1550nm)

Housing: High-impact , Flame retardant plastic (UL 94V-0)

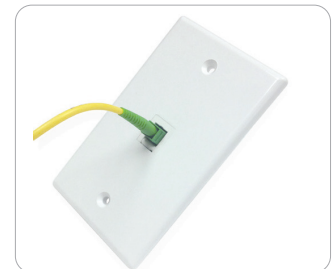
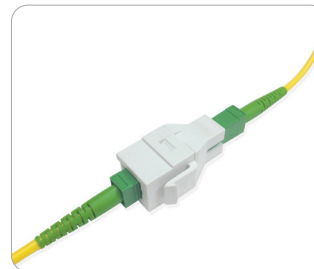
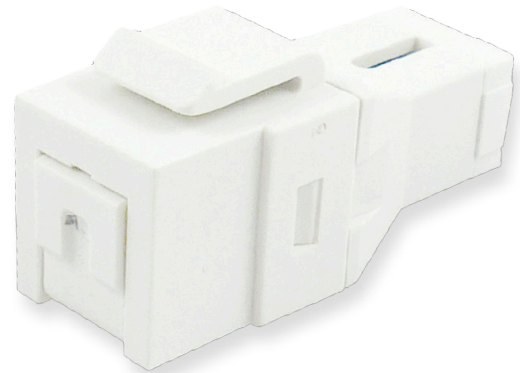
Sleeve: Zirconia (Ceramic)

### Dimensions

SIZE: 0.65"W x 0.64"H x 1.5"D

### Ordering Information

P/N	Model	Description
125-0908	JFK-AS	Fiber Keystone w/Auto Shutter (1pc)



Compatible with most wall plates

