

**CPO4**

The Primex CPO4 is a 4-port customer premise wall outlet that allows flexible in-suite termination of multiple services including fiber, tel, data, voice, and video keystone jacks. It's surface mount-ability allows it to be used in both new and retrofit wiring applications.

This small footprint outlet is compatible with Cat5e, Cat6, RJ11, RJ12, standard fiber adapters, as well as Primex's Auto Shutter Fiber Jack.



125-1560  
Includes 3x blank keystones,  
1x Fiber Keystone with Auto-Shutter.

**Features & Benefits**

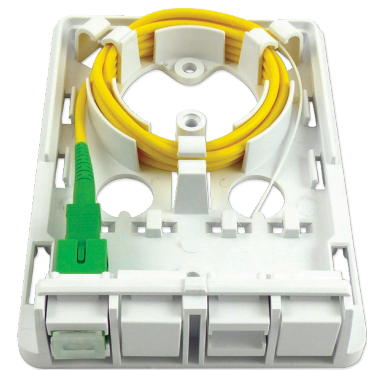
- Accommodates up to 4 standard Cat5e, Cat6, telephone (RJ11/RJ12) and Auto Shutter Fiber Jack keystones
- Small and compact form factor (5" x 3.5" x 1.1") provides low-profile aesthetic
- 1-2 fiber capacity with two splice positions for versatility
- Fits standard 4"x2" wall outlet receptacle
- Made of flame-retardant ABS Polymer for durability
- UL/cUL Listed

**Dimensions**

SIZE: 5"L x 3.5"W x 1.1"H

**Ordering Information**

| P/N         | Model         | Description  |
|-------------|---------------|--|
| 125-0911    | CPO4-1        | Customer Premise Outlet (4 port) empty                                     |
| 125-1101    | CPO4-1A       | Customer Premise Outlet w/1x simplex SC/APC adapter                        |
| 125-1560    | CPO4-1C       | Customer Premise Outlet w/1x Fiber Auto-Shutter Keystone (sold separately) |
| 125-0908    | JFK-AS-WT     | Fiber Keystone w/auto shutter  |
| 125-0947-WT | JCat6-90-WT   | Cat6, 110 IDC, 90° HD  |
| 125-0946-WT | JCat6-180-WT  | Cat6, 110 IDC, 180° HD   |
| 125-0960    | JBlank        | Blank keystone   |
| 125-0961    | F-CON-K       | F-connector 3GHz keystone  |
| 125-0959-WT | RJ12-90       | 3-line voice, HD   |
| 125-0949-WT | JCat5e-90-WT  | Cat5e, 110 IDC, 90° HD   |
| 125-0948-WT | JCat5e-180-WT | Cat5e, 110 IDC, 180° HD  |
| 125-1295    | FKA           | Fiber Keystone Adapter   |



125-1101  
Includes 2x blank keystones, 2x fiber keystones,  
1x SC/APC simplex adapter. Fiber not included.

