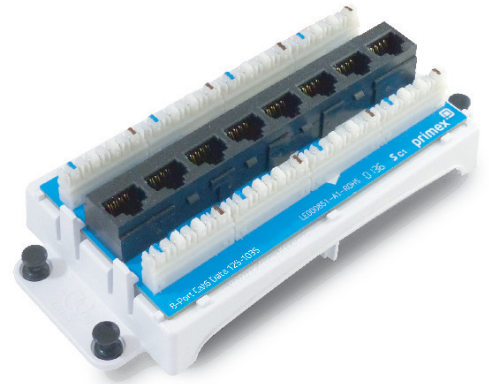


## 8-Port Cat6 Data Module

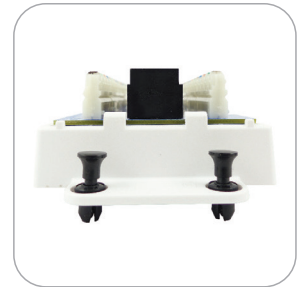
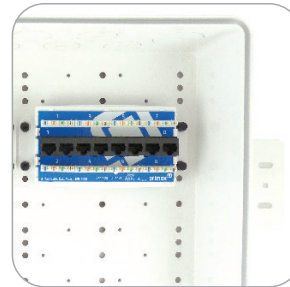
The Primex 8-port Cat6 Data Module provides a termination point for simplified cross connect signal distribution from a central location. Designed to fit in Primex Media Panels for structured wiring, the modules offer quick and easy front punch down termination.

They extend the networking functionality of the connected home in SFU and MDU applications while providing effective cable management.



### Features & Benefits

- Eight RJ45 data input jacks and eight 4-pair 110 IDC's for output provide robust data and voice distribution
- Easily and securely installed with four push pins
- Simplified cross connect signal distribution for effective cable management of the connected home
- Fits Primex Media Panels for structured wiring (P2100, P3000, P4200)
- Arched mounting bracket allows for cable run access
- Wiring: 568A/568B
- UL/cUL Listed



### Dimensions

SIZE: 6.5"L x 3"W x 1.75"H

### Ordering Information

P/N	Model	Description
125-1035	DM8Cat6	8-Port Cat6 Data Module

