

### 1. SUMMARY

The Primex Rackmount Fiber Distribution Frame (FDF) terminates 24-48 fibers for central office applications.

Ideal for small and medium-sized business fiber and MDU installation, the FDF provides simple, front-access cable management in a compact chassis.

It fits 19" and 23" racks and offers dual 12-fiber splice trays with optional pre-installed adapters.

### 2. PRODUCT DIMENSIONS

1RU SIZE: 12.25"L x 16"W x 1.75"H

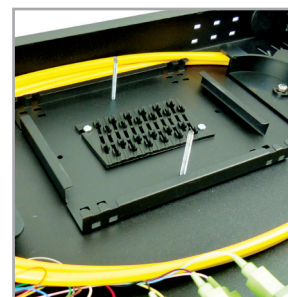
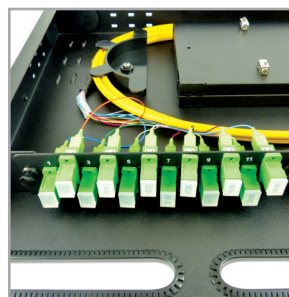
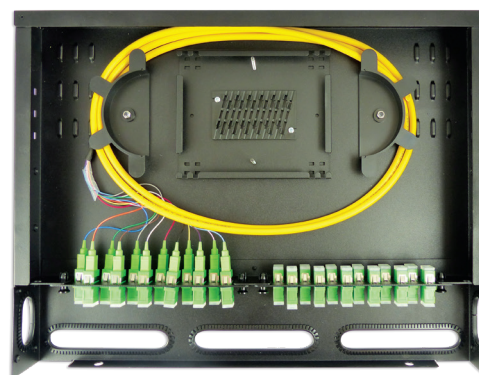
2RU SIZE: 12.25"L x 16"W x 3.5"H

### 3. FEATURES & BENEFITS

- 24-fiber central office solution for business fiber and MDU applications.
- Front-accessible fiber management in compact design fits 19" and 23" cabinets.
- 1RU scalable up to 48 fibers with LC connectors, 2RU scalable up to 96 fibers with LC connectors.
- Dual 12-fiber stacking splice trays for compact and managed cable pathways.
- Ample internal cable storage for clean, bend radius-protected cable management.
- Optional factory-installed SC/APC adapters for reduced installation time.
- Rugged, durable metal chassis.

### 4. CONFIGURATIONS

Part #	Description
125-1150	1RU FDF with 6 SC/APC adapters included
125-1154	1RU FDF with 12 SC/APC adapters included
125-1155	1RU FDF with 24 SC/APC adapters included
125-1201	1RU FDF empty (24 SC/APC adapter capacity)
125-1199	2RU FDF empty (48 SC/APC adapter capacity)
125-1200	2RU FDF with 48 SC/APC adapters included



FOR MORE INFORMATION CONTACT:

1.604.881.7875 1.604.881.7835

[www.primex.com](http://www.primex.com)

