

The SOHOpro™ PR2300 Media Panel from Primex is a 23" tall (approx.) freestanding or surface-mount white plastic telecom enclosure for use inside a residence (MDU/SFU) or a business. It consists of the main cabinet, a front lid, an optional back lid, and detachable base.

It can be placed where the installer and/or homeowner sees fit within the residence due to its freestanding trait. This

includes a closet, storage room, or freestanding next to a desk in a home office. Dimensions: 17"W x 23"H x 6.5" D

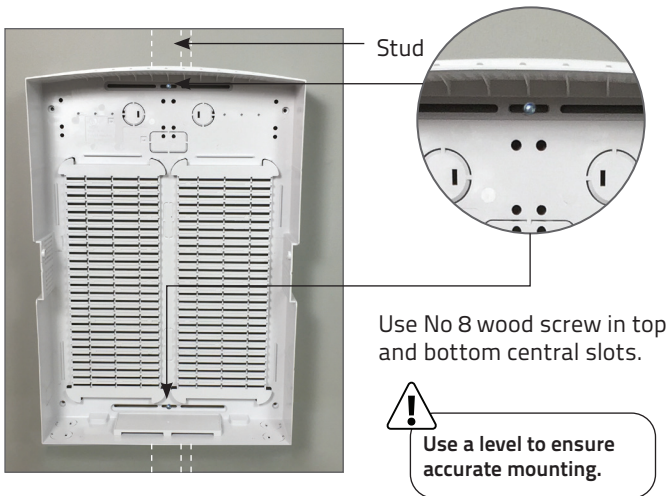
Maximum load ratings:
-Enclosure 10kg (22lbs).
-Mounting bracket 2.5kg (5.5lbs).

UL Listing: 83GA 

WALL MOUNTED INSTALLATION

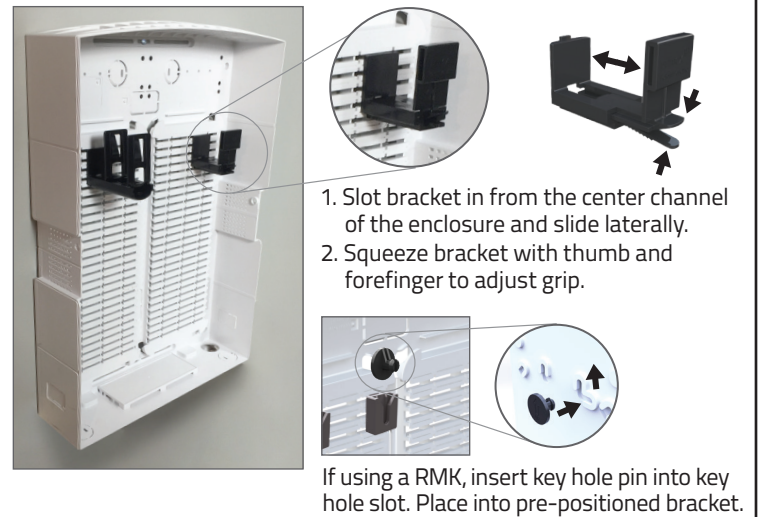
STEP 1

Affix PR2300 on a single stud using two no. 8 wood screws in the central slots.



STEP 2

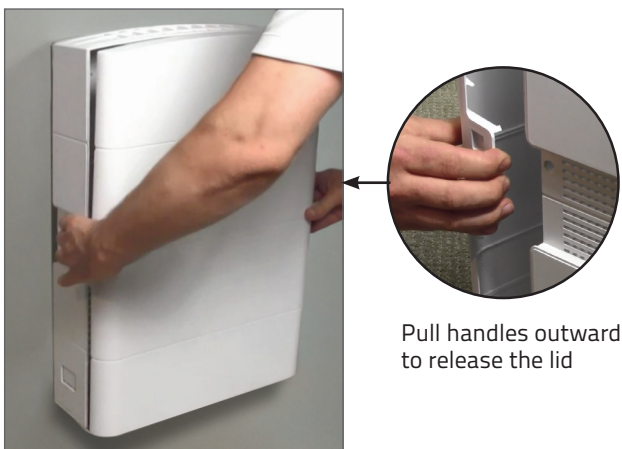
Install component mounting bracket(s).



STEP 3

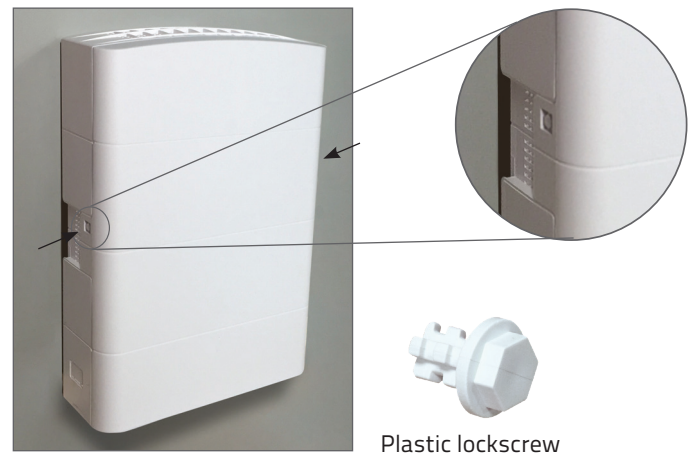
Install lid on base.

Holding lid from the sides handles, line up the lid with the base and press gently into place.



STEP 4

Secure lid with two provided plastic lockscrews using a 3/8" can wrench.



FOR MORE INFORMATION CONTACT:

📞 1.604.881.7875 📠 1.604.881.7835
www.primex.com     

primex  Fit everything. Together.