

PRIMEX

Product Specifications

SOHOpro™ PR2300

Brownfield WiFi Transparent Media Panel

1. SUMMARY

The Primex SOHO Pro™ PR2300 Brownfield WiFi transparent media panel forms the centerpiece of the connected home. It provides a centralized distribution point for the components and services that make today's homes smart.

Its flexible design provides a convenient, secure, enclosure for installing and distributing broadband and smart home services within residential premises.

Freestanding or wall-mounted, the installer-friendly PR2300 is ideal for fiber retrofits where no existing in-wall solution exists.

It can be preloaded for quick plug-and-play installation with Primex keystones (Cat5e, Cat6/6a, coax, fiber).

2. PRODUCT DIMENSIONS

Inside: H 21.4" / W 14.6" / D 4.7"

Outside w/o stand: H 21.9" / W 15.0" / D 5.2"

Outside w/stand: H 23.2" / W 17.0" / D 6.5"

3. FEATURES & BENEFITS

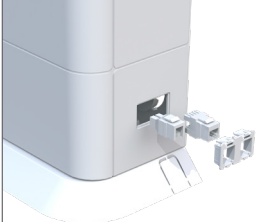
- WiFi transparent, engineered plastic delivers up to 15x more WiFi pass-through than metal alternatives.
- Holds all the cabling and active (modem, ONT, USP), and passive (cable management clips/spools, modules) components in a compact, stylized housing.
- Quick and easy component installation using Primex's patented Rail Mounting Brackets (RMB).
- Easily centralize smart home services anywhere within the residence via wall mount or free-standing placement.
- Low-profile, aesthetically-pleasing design blends with decor.
- Protective, decorative fins prevent customers from placing spillables on top of enclosure.
- Keystone adapters on sides allow for simple network plug and play functionality.
- Passive cooling via venting ensures equipment remains within operating temperature limits.
- Easy access lids feature snap-in handles that blend into the design and add venting. Simple locking mechanism on the handles limits end-user access.
- UL/ULC Listed



Single & double mounting brackets (RMB/RMB2)



Keyhole mounting bracket (KMS)



Plug and play keystone adapter



Multiple component mounting



Wall mount



Free-standing

FOR MORE INFORMATION CONTACT:

📞 1.604.881.7875 📠 1.604.881.7835

www.primex.com

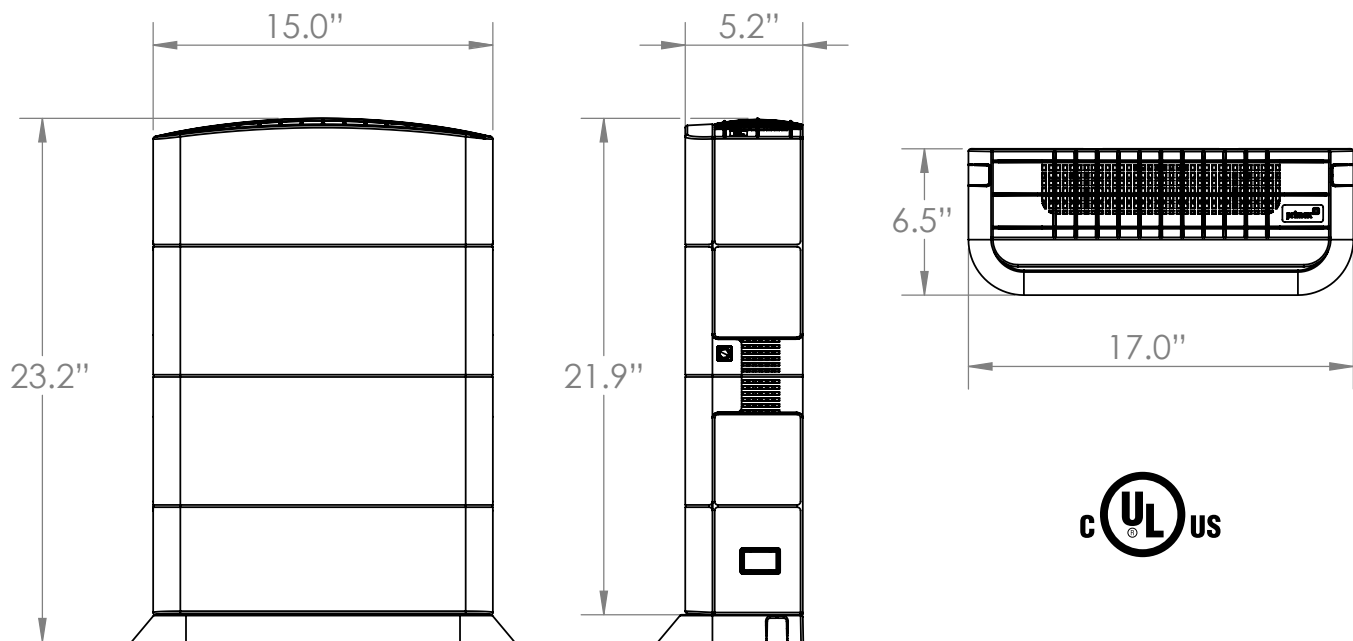


4. SIZING/PART NUMBER

MODELS

PART NUMBER	PART NAME	DESCRIPTION
125-1182	PR2300-Wall Mount-1	PR2300 brownfield WALL mount version with base, lid, 2 rail mount brackets, 4 dual rail mount brackets and keystone plates
125-1189	PR2300-Floor Mount-1	PR2300 brownfield FLOOR mount version with base, lid, stand 2 rail mount brackets, 4 dual rail mount brackets and keystone plates
125-1449	PR2300-Floor Mount-2	PR2300 brownfield FLOOR mount version with base, lid, stand 2 rail mount brackets, 2 dual rail mount brackets, 2 rail mount keyholes and keystone plates
125-1213	RMB	6 pack of SINGLE rail mount brackets
125-1214	RMB-2	6 pack of DUAL rail mount brackets
125-1338	RMK	Rail mount keyhole
125-1290	PR2300FS	OPTIONAL FLOOR STAND for PR2300 MDE

5. TECHNICAL DRAWINGS



FOR MORE INFORMATION CONTACT:

1.604.881.7875 1.604.881.7835

www.primex.com

