

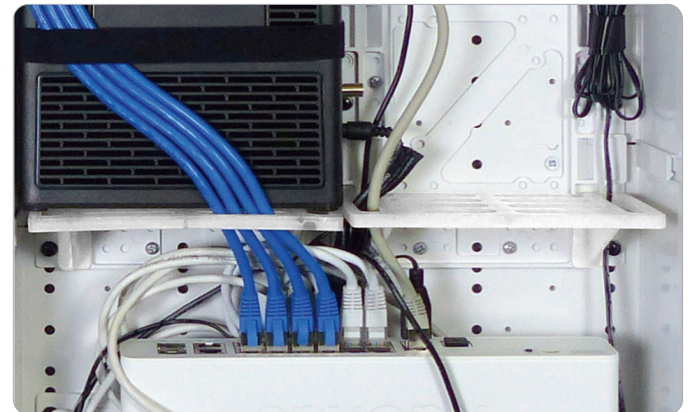
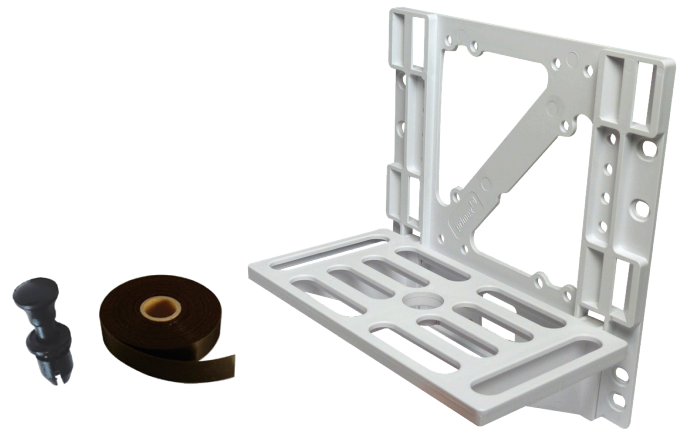
## Shelf Mounting System

Primex Shelf Mounting System (SMS) extends the mounting functionality of the Primex SOHO Pro P2100, P3000, P4200 and PR1500 Media Panels.

It provides 3.5" of mounting depth in the interior of the Media Panel and holds bulkier and heavier components securely with the mounting tape and pushpins.

It slots easily into the standardized hole mounting pattern of the SOHO Pro Media Panel series.

Available individually or in bulk.



The SMS holds heavy components and acts as a divider between service providers

### Features & Benefits

- Rigid internal component mount for SOHO Pro Media Panel line (P2100/P3000/P4200, PR1500) supports heavy/oversize components up to 5.5lbs
- Dual shelves act as a divider between service providers
- Slots into standard hole mounting pattern allowing for quick and easy installation
- High quality engineered plastic made in North America for long-lasting component mounting
- Lightweight and easy to install with snap-in pushpins
- UL/cUL Listed

### Dimensions

SIZE: H 6.4" / W 6.6" / D 3.7"

### Ordering Information

P/N	Model	Description
125-1729	SMS-2FT	SMS Shelf (single), 2' mounting tape, 10x pushpins
125-1541	SMS	SMS Shelf (single), 10x pushpins
125-1522	SMS-1.5M-B18	SMS Shelf (bulk/18), 5' mounting tape, 10x pushpins
125-1896	SMS-ES2F	Shelf Mounting System w/ Equipment Strap

