

The Primex PR1500 Allfield MDE is an all-in-one new build and retrofit WiFi transparent enclosure. It mounts in-wall, on-wall or free standing for single or multi-family applications. The unique, patented Smart Lid is self-aligning and closing with an adjustable depth and clean aesthetics. The PR1500 provides ample room for multi-play applications from broadband to smart home installations.

### WARNING

- **DO NOT** stretch enclosure walls or lid won't seat properly.
- **DO NOT** over tighten mounting screws.
- **DO NOT** use mounting screws larger than #8.
- **RECOMMENDED** mounting height, 36" - 48" from the floor.
- **LEAVE** paintshield in during installation to protect enclosure during drywall installation and painting.

\* On-wall maximum load rating: 10kg (22lbs)

## GREENFIELD Installation

### STEP 1

#### Install horizontal joist and electrical box

To ensure a comfortable working height it is recommended that the top of the electrical box be installed 36" - 48" from the ground. Ensure that the support joist is level.

**Note:** Install if required by your local electrical code.

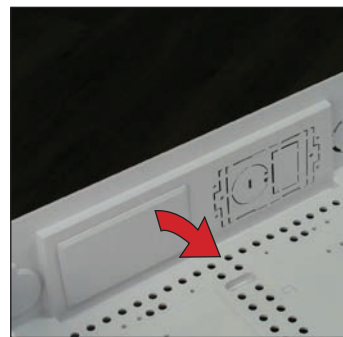


### STEP 2

#### Remove bottom knock outs

Prior to installation, remove required knockout covers. Then, remove the knockout(s) for the electrical box using a Primex (P/N: 125-1683) flush cutter tool to trim support ribs. Trim excess plastic with knife.

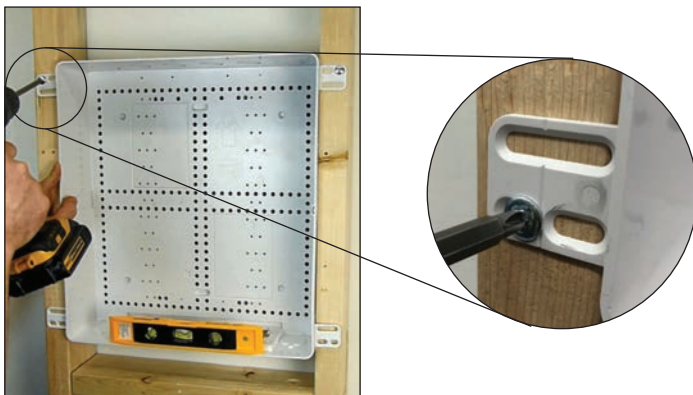
Supports drop-in and under-mount gangbox installations.



### STEP 3

#### Install base

Install single #8 flat head screw in corner flange, level, then secure with additional screws.



### STEP 4

#### Install Electrical Kit

Place gangbox into cut out knockout, connect power and secure receptacle to gangbox using screws.

**Note:** Secure gangbox to horizontal joist if required by your local electrical code.



FOR MORE INFORMATION CONTACT:

📞 1.604.881.7875 📠 1.604.881.7835

[www.primex.com](http://www.primex.com)

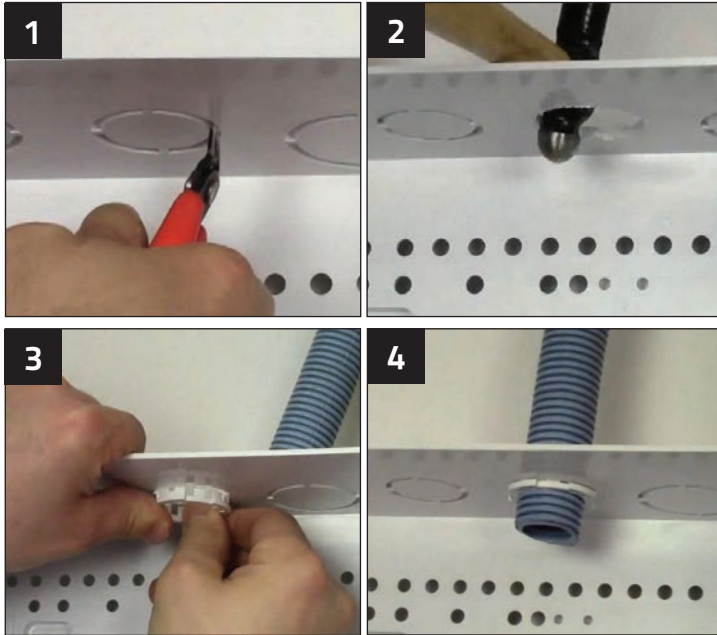


**primex**  Fit everything. Together.

**STEP 5**

**Remove top knock outs and connect distribution conduit**

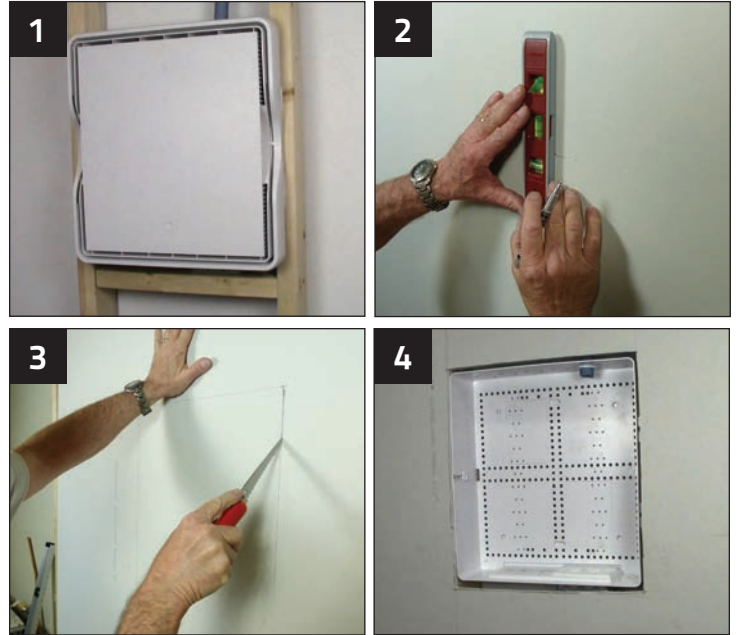
Remove the conduit knockouts using a flush cutter tool and blunt force tool. Connect conduit for outgoing and incoming services and secure with Primex conduit reducers (3/4"-1/2" reducers P/N: 125-1022, 1" - 3/4" reducers P/N: 125-0936).



**STEP 6**

**Measure, mark, cut and mount drywall**

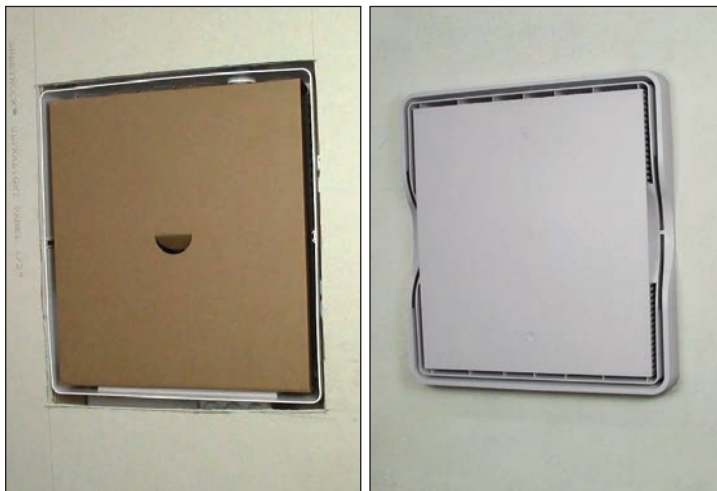
Measure, mark, then cut drywall where enclosure will be mounted. Fit drywall over top of the installed enclosure base and secure.



**STEP 7**

**Paint wall and affix smart lid**

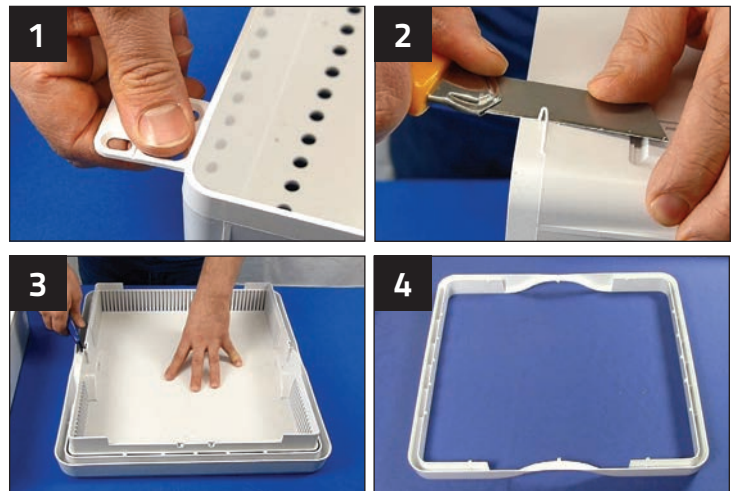
Leave paintshield in during installation to protect enclosure during drywall installation, mudding and painting.



**GREENFIELD TO BROWNFIELD CONVERSION**

**Remove tabs and frame**

Manually remove the tabs from the base. Using flush cutters, cut away the frame from the lid and smooth any rough edges with a knife.



FOR MORE INFORMATION CONTACT:

📞 1.604.881.7875 📠 1.604.881.7835

[www.primex.com](http://www.primex.com)



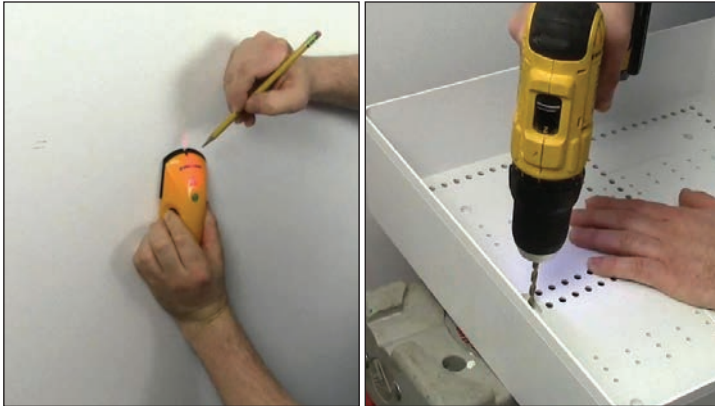
**BROWNFIELD Wall-mount Installation**

**STEP 1**

**Wall mount install**

Using a stud finder, mark position at a recommended height of 36" - 48".

Pre-drill holes in the center slots of the enclosure prior to mounting.

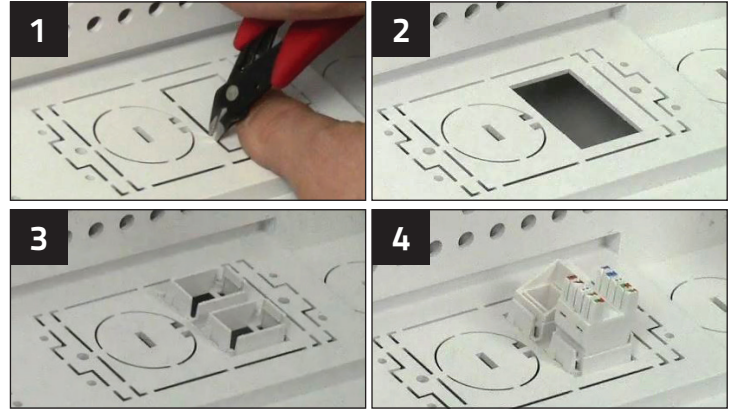


**STEP 2**

**Remove knockout and insert optional keystones.**

Trim support ribs on knockout using flush cutter tool. (P/N: 125-1683) Snap in keystone adapter (P/N: 125-1152 sold separately) and install optional keystones (available from Primex).

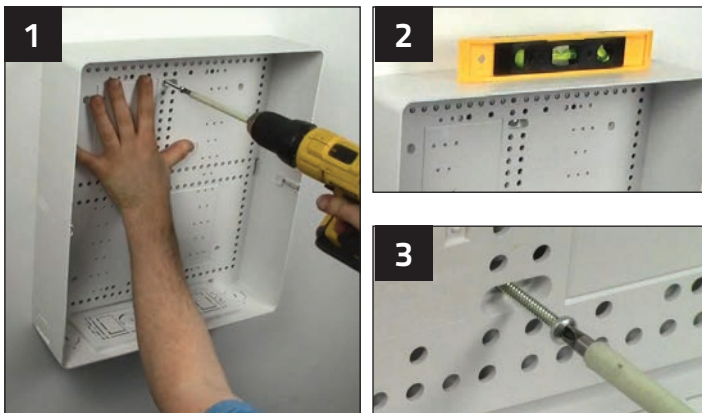
Remove knockouts for power as needed.



**STEP 3**

**Affix PR1500 to stud**

Affix PR1500 on a single stud using two No. 8 wood screws in the pre-drilled holes. Be sure to level before securing the bottom screw.



**STEP 4**

**Affix Smart Lid**

Place smart lid into place. Optional key lock kit (P/N: 125-1570) and hex lock kit (P/N: 125-1641) available.



FOR MORE INFORMATION CONTACT:

📞 1.604.881.7875 📠 1.604.881.7835

[www.primex.com](http://www.primex.com)



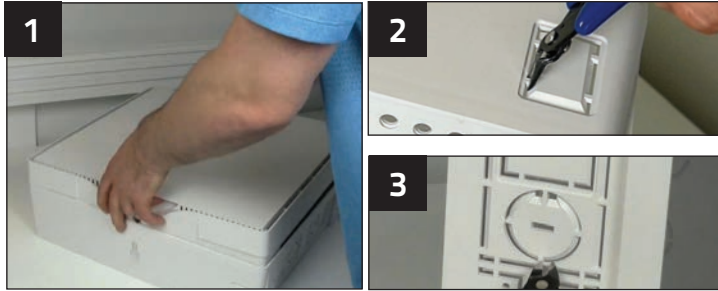
**primex**  Fit everything. Together.

**BROWNFIELD Freestanding Installation**

**STEP 1**

**Prepare enclosure**

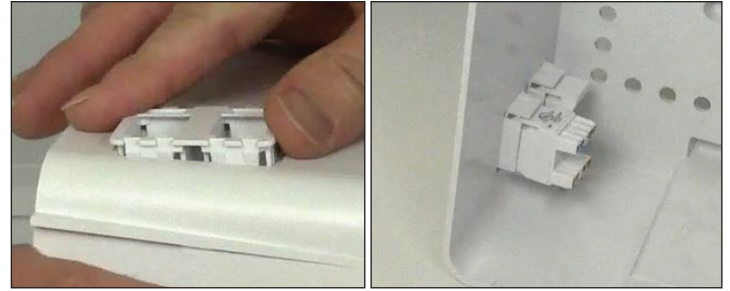
Remove lid. Trim support ribs on knockouts using flush cutters.



**STEP 2**

**Install keystone adapter**

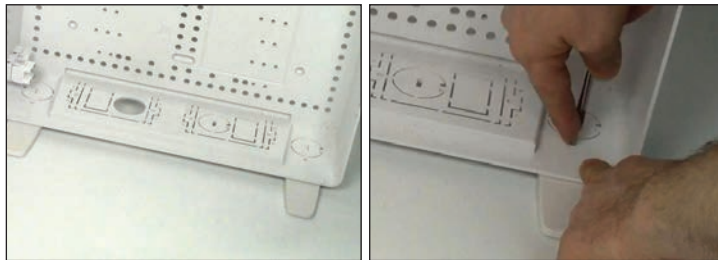
Snap in optional keystone adapter (P/N: 125-1152 sold separately) and jacks.



**STEP 3**

**Attach feet**

Install accessory feet (P/N: 125-1571 sold separately) using the screws provided.



**STEP 4**

**Finish Installation**

Connect services and mount additional components using Primex's mounting systems. Optional key locks available (P/N: 125-1570).



**ACCESSORIES**

Product	Description	SC	Product	Description	SC	Product	Description	SC
	7" RMP w/RMB2(x2), pushpins (x10)	125-1655		Fiber Transition Cases White ABS FTC - w/Screw Cap	125-0945		Cat5e, 110 IDC, 90° HD	125-0949-WT
	7" RMP w/RMB2(x2), pushpins (x10)	125-1656		FTC - w/Single SC/APC Adapter	125-0873		Cat6, 110 IDC, 90° HD	125-0948-WT
	7" RMP w/RMB2(x2), pushpins (x10)	125-1657		FTC - w/ext. Adapter Mount	125-0849		Cat6, 110 IDC, 90° HD	125-0947-WT
	10" RMP w/RMB2(x4), pushpins (x10)	125-1658		Fiber Transition Outlets FTO-w/1 SC/APC Adapter	125-0889		Cat6A, 180°, Unshielded	125-0946-WT
	10" RMP w/RMB2(x4), pushpins (x10)	125-1659		FTO-w/Integrated Splice Tray	125-0879		Cat6A, 180°, Shielded	125-1628-WT
	10" RMP w/RMB2(x2)/RMK(x2), pushpins(x10)	125-1660		SC/APC Fiber Keystone w/Shutter	125-0908		3-Line RJ12 Voice Jack	125-0959-WT
	Universal Mounting Plate (UMP)	125-0770		Keystone Adapter	125-1152		Blank keystone	125-0960-WT
	10" UMP w/5' tape, pushpins (x10)	125-1623		3/4"-1/2" Reducer	125-1022		Cat5e coupler, HD	125-1266-WT
	Shelf Mounting System (Single-1/pk)	125-1541		1"-3/4" Reducer	125-0936		Cat6 coupler, HD	125-1267-WT
	Shelf Mounting System (Divider-2/pk)	125-1542		2-Way Coax Splitter (horizontal)	125-1661		RG12 coupler, HD	125-1268-WT
	Shelf Mounting System (bulk-18/pk)	125-1522		4-Way Coax Splitter (vert/horiz)	125-1574		Electrical Installation Kit	125-1355
	33' Roll Of Mounting Tape	125-0779		6-Way Coax Splitter (vert/horiz)	125-1575		PR1500 Freestanding Feet (2)	125-1571
	10' Roll Of Mounting Tape	125-1274		8-Way Coax Splitter (vert/horiz)	125-1576		PR1500 Cylinder Lock Kit (2)	125-1570
	Mounting Plate Pushpins (100/bag)	125-0829		White ABS Hurricane Clip (12/pk)	125-0239		PR1500 Hex Lock Kit (2)	125-1641
	Mounting Plate Pushpins (10/bag)	125-1535		F-Connector Keystone	125-0961			
	8-Port Cat5e Data Module	125-0986						
	8-Port Cat6 Data Module	125-1035						
	8-Port Voice RJ31x Module	125-0987						
	6-Port Cat6a Data Module	125-0975						
	8-Port Voice Cat6 w/RJ45 Module	125-0977						
	1x8 Port 4 Line w/RJ45 Voice Module	125-0976						

FOR MORE INFORMATION CONTACT:

📞 1.604.881.7875 📠 1.604.881.7835

www.primex.com

📘 📺 📺

**primex** Fit everything. Together.