

# PRIMEX

## Product Specification Sheet

PRODUCT  
MODEL CODE

# Fiber Splice Tray

12 and 24 Fibers

### 1. SUMMARY

The Primex Fiber Splice Trays offer secure, efficient management of 12-24 fibers within Primex Wave outside plant enclosures.

Easily stacked and scalable, these sturdy trays protect fiber bend radius across a range of splicing applications.

The 12 and 24 trays hold fusion splices, while the universal tray holds, single fusion, mechanical or ribbon fiber.

The trays are ideal for MDU applications where splicing is required between outdoor and indoor fiber.

### 2. SIZES

Standard: 12, 24 fusion splices;  
Universal: 12 fusion, 4 ribbon, 4 mechanical splices

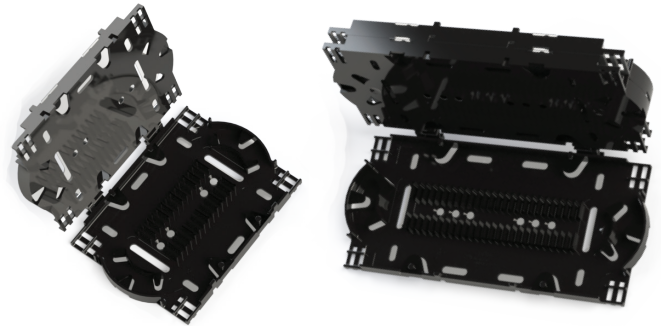
### 3. FEATURES & BENEFITS

- 12 and 24 tray options for small or large fiber runs.
- Universal splice tray with snap in splice clips for single fusion, ribbon or mechanical splicing applications.
- Fiber channels securely hold and route fiber while protecting bend radius.
- Stackable design allows for on-demand scaling up of application requirements.
- Tension-hinged trays stay open while routing fiber for easy access and installation.
- Quick release splice mount allows for rapid removal and installation of Primex splice trays within OSP enclosures.
- Clear covers allow for touchless fiber inspection.
- High-quality engineered plastic made in North America for long-lasting protection.
- UL-listed and industry-standardized for reliable implementation.



### 4. CONFIGURATIONS

Part #	Description
125-1520	Fiber Splice Tray, 12 Fiber
125-1521	Fiber Splice Tray, 24 Fiber
125-1620	Universal Splice Tray (fusion/mechanical/ribbon)
125-1668	Quick Release Splice Mount

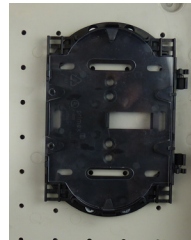
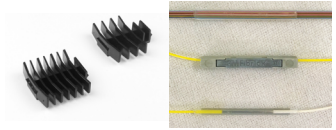


12 Fiber Splice Tray

24 Fiber Splice Tray



**Universal Splice Tray** with swappable clips for 6-12 single fusion, or 1-4 ribbon, or 1-4 mechanical splices.

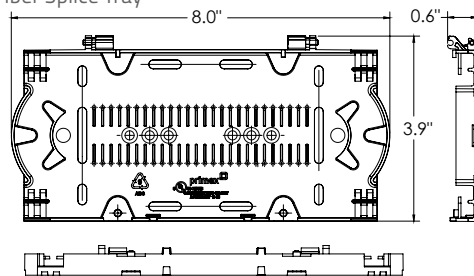


#### Quick Release Splice Mounts

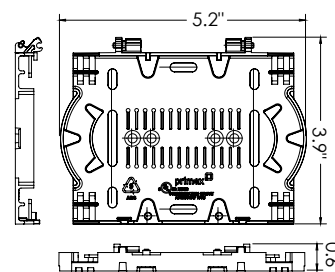
Twin brackets affixed into enclosure base allow for quick and easy tray install and release. Compatible with all Primex Splice Trays.



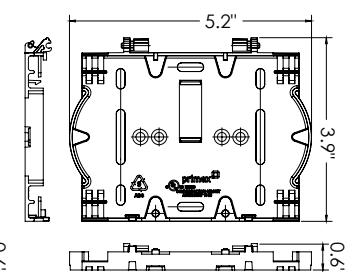
24 Fiber Splice Tray



12 Fiber Splice Tray



Universal Splice Tray



FOR MORE INFORMATION CONTACT:

1.604.881.7875 1.604.881.7835

[www.primex.com](http://www.primex.com)

**primex** Fit everything. Together.