

Data/Voice Module
8-Port Cat5e & 8-Port Cat6

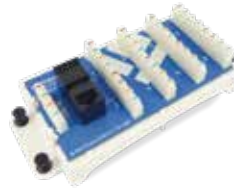
8-port Cat5e & Cat6/6A Data/Voice Modules provide a termination point for simplified cross connect signal distribution from a central location.



Part #	Description
125-0986	8-Port Cat5e Data/Voice Module
125-1035	8-Port Cat6 Data/Voice Module
125-0977	8-Port Cat6 Data/Voice w/RJ45
125-0975	8-Port Cat6A Data Module

Voice Module
8-Port Voice with RJ31X

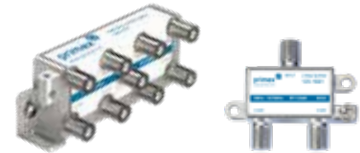
8-port Voice Module offers telephone/fax termination points and an integrated RJ31X or RJ45 jack for emergency line seizure.



Part #	Description
125-0987	8-Port Voice Module w/RJ31x
125-0976	8-Port Voice Module w/RJ45

Coax Splitters
2, 4, 6, 8-Way

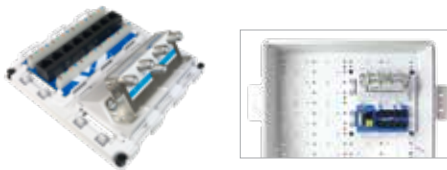
Primex Coax Splitters are purpose-built to meet DOCSIS 3.1 and MOCA 2.5 standards.



Part #	Description
125-1661	2-Way Coax Splitter (horizontal)
125-1574	4-Way Coax Splitter (vert/horiz)
125-1575	6-Way Coax Splitter (vert/horiz)
125-1576	8-Way Coax Splitter (vert/horiz)

Combo Modules
Cat6 & Cat6A

Modular units combine Cat6/6A with Coax and voice on one platform.



Part #	Description
125-1665	8-Port Cat6 & 1X4 Splitter
125-1666	6-Port Cat6A & 1X4 Splitter
125-1667	4-Port Cat6/ 4-Port Voice & 1X4 Splitter
125-1750	1X8 RJ45 & 1X8 Splitter

CPO4
Customer Premise Outlet

4-port customer premise wall outlet is compatible with Cat5e, Cat6, Cat6a, RJ11, RJ12, standard SC/APC adapters, as well as Primex's Auto Shutter Fiber Jack.



Part #	Description
125-0911	Customer Premise Outlet (4 port)

Cat5e, Cat6, Cat6a Jacks
90° & 180° UTP Keystone

High-performance Cat5e, Cat6, Cat6a 90° UTP keystone jacks fit in standard wall plates suited for high-speed data applications.



Part #	Description
125-0949-WT	Cat5e, 110 IDC, 90° HD
125-0948-WT	Cat5e, 110 IDC, 180° HD
125-0947-WT	Cat6, 110 IDC, 90° HD
125-0946-WT	Cat6, 110 IDC, 180° HD
125-1628-WT	Cat6a, 180° Toolless, unshielded
125-1629-WT	Cat6a, 180° Toolless, shielded

3 Line Voice
RJ12 Voice Keystone

3 Line Voice RJ12 keystone jack fits in standard wall plates and provides easy termination of telephone/fax/alarm.



Part #	Description
125-0959-WT	3-line voice, HD

Fiber Auto-Shutter Jack
Fiber Keystone w/Auto Shutter

Fiber Keystone with Auto Shutter offers easy connectivity for workstation cabling termination on single mode and multimode fiber cables. Closes automatically upon fiber removal.



Part #	Description
125-0908	Fiber Keystone w/shutter

F-Connector
3GHz Keystone Jack

F-Connector 3GHz Keystone jack fits in standard wall and surface mount plates and provides quick and easy coaxial connection.



Part #	Description
125-0961	F-connector 3GHz keystone

VIEW PRODUCT VIDEOS ONLINE AT: WWW.PRIMEX.COM

FOR MORE INFORMATION CONTACT:

☎ 1.604.881.7875 📠 1.604.881.7835

www.primex.com

Electrical Outlets

Gangbox kit & Rotating Outlet Doubler

The Electrical Kit features a gang box, outlet, faceplate, 4 conduit adapters and integrated cable clamp.

The surge protected 360° Electrical Outlet has unique rotating sockets allowing power cable routing within a tight space while doubling the sockets from 2-4 in a Primex MDE.

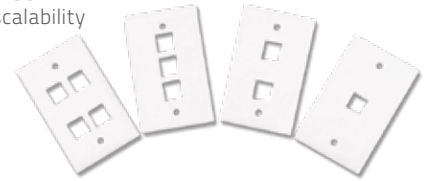


Part #	Description
125-1355	Electrical Installation Kit
125-1547	360° Rotating Surge Protected Outlet

Wall Plates

Single-Gang, 1-4 Port

Single-Gang Wall Plates for Cat5e, Cat6, Cat6a and Fiber jacks offer application scalability in a small footprint.

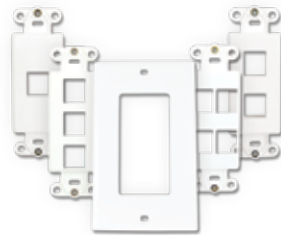


Part #	Description
125-0957-WT	Single-gang wall plate, 1-port
125-0958-WT	Single-gang wall plate, 2-port
125-0955-WT	Single-gang wall plate, 3-port
125-0956-WT	Single-gang wall plate, 4-port

Wall Jacks

Decorative Ports & Plate

Decorative Wall Jacks and single-gang faceplate for Cat5e, Cat6, Cat6a and Fiber jacks offer application scalability in a small footprint.

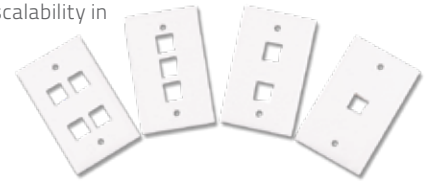


Part #	Description
125-0951-WT	Decorative wall jack, 1-port
125-0952-WT	Decorative wall jack, 2-port
125-0953-WT	Decorative wall jack, 3-port
125-0954-WT	Decorative wall jack, 4-port
125-0950-WT	Decorative wall plate

Enlarge Wall Plates

Single-Gang, 1-6 Port

Single-Gang Enlarge Wall Plates for Cat5e, Cat6, Cat6a and Fiber jacks offer application scalability in a small footprint.



Part #	Description
125-1241-WT	Enlarge wall plate, 1-port, glossy
125-1236-WT	Enlarge wall plate, 2-port, glossy
125-1242-WT	Enlarge wall plate, 3-port, glossy
125-1243-WT	Enlarge wall plate, 4-port, glossy
125-1244-WT	Enlarge wall plate, 6-port, glossy
125-1288-WT	Enlarge wall plate, 2-port, w/Cat6 & Coax, glossy
125-1237-WT	Enlarge wall plate, 2-port, w/Cat6 & Coax, textured

Conduit Reducers

Adapters for Verge MDE's

The Primex Conduit Reducers for Media Distribution Enclosures allow for secure conduit placement within an enclosure.

Two reducer sizes provide both 3/4" and 1/2" conduit home runs back to the structured wiring enclosure.



Part #	Description
125-1022	3/4" - 1/2" reducer
125-0936	1" - 3/4" reducer

Tools

Flush Cutter Tool, Cable Ties, Hex Tool

Flush Cutter is a precision snipping tool ideal for cutting wires, removing knockouts on Primex enclosures, and trimming cable ties.



Part #	Description
125-1683	Flush Cutters w/4" Cable Ties (10)
125-1333	Cable Tie, 4", Black, 50/bag
125-1334	Cable Tie, 4", Natural, 50/bag
125-1335	Cable Tie, 8", Black, 50/bag
125-1336	Cable Tie, 11", Natural, 50/bag
125-1337	Cable Tie, 11", Black, 50/bag
125-0609	Hex Screw Tool

VIEW PRODUCT VIDEOS ONLINE AT: WWW.PRIMEX.COM

FOR MORE INFORMATION CONTACT:

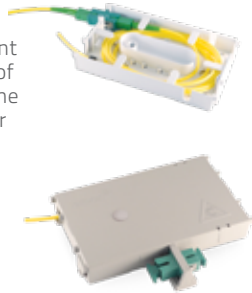
1.604.881.7875 1.604.881.7835

www.primex.com [f](#) [t](#) [in](#) [o](#) [y](#)

primex  Fit everything. Together.

FTC
Fiber Transition Case

The Fiber Transition Case (FTC) is an efficient and adaptable solution for storing up to 3' of fiber drop cable and a simplex connector. The FTC is ideal for test points, FTTH, and repair splices.



Part #	Description
125-0945	White FTC w/screw cap
125-0873	White FTC w/single SC/APC Adapter
125-0848	Grey FTC w/screw cap
125-0849	White FTC w/adapter mount
125-0850	Grey FTC w/adapter mount

FTO
Fiber Transition Outlet

The Fiber Transition Outlet (FTO) is a quick-splice solution that manages up to 3' of fiber drop cable.

This compact enclosure offers flexible entry ports and an integrated splice tray that accommodates up to two fusion splices with room for two fiber adapters and buffer tube management.



*UPC available

Part #	Description
125-0879	FTO White w/Splice Tray
125-0891	FTO Grey w/Splice Tray
125-0889	FTO White w/1 SC/APC adapter
125-1749	FTO White w/2 SC/APC adapters

Fiber Multi-Port
Drop Cable Enclosure Ports

The Primex Fiber Multi-Port is an easy-to-install lay-in grommet that seals out dust and critters from enclosures.

Ideal for multiple drops from either a splitter or splice, the Multi-Port runs from 1-8 fibers between 2mm - 4.3mm.



Part #	Description
125-1012	Multi-port - 8 fiber
125-1025	Multi-port - 1 fiber
125-1026	Multi-port - 2 fiber (3mm)
125-1027	Multi-port - 2 fiber (4.3mm)
125-1028	Multi-port - 4 fiber (3.8mm)
125-1029	Multi-port - 6 fiber
125-1038	Multi-port - 4 fiber (2mm)

Fiber Management
Side Mount Clip, Spider Spool & Hurricane Clip

The Spider Spool and Hurricane Clip route, manage and store cabling. They are easily mounted in any Primex Verge or Wave enclosure, and adaptable to a range of other applications.

The Side Mounting Clip (SMC) allows for Media Distribution Enclosures (MDE) to be installed into the stud via the sidewall of the enclosure and also manage cable. Fits only Narrow/deep MDE models.

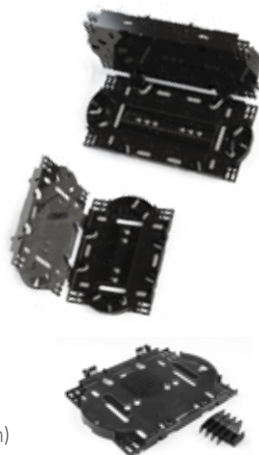


Part #	Description
125-1777	Side Mounting Clips (40pc)
125-0928	Quick Release Spider Spool (gray)
125-0929	Spider Spool (gray)
125-0933	Spider Spool (white)
125-0237	Hurricane Cable Clip (grey)
125-0239	Hurricane Cable Clip (white)

Fiber Splice Tray
12, 24, and Universal Splice Trays

The Fiber Splice Trays offer secure, efficient management of 12-24 fibers within Primex Wave outside plant enclosures.

Easily stacked and scalable, these sturdy trays protect fiber bend radius across a range of splicing applications and are ideal for MDU applications where splicing is required between outdoor and indoor fiber.



Part #	Description
125-1520	Fiber Splice Tray, 12 Fiber
125-1521	Fiber Splice Tray, 24 Fiber
125-1620	Universal Fiber Splice Tray (mechanical, fusion, ribbon)

Microduct Termination Port
8.5/10mm Microduct

The Microduct Termination Port provides strain relief for standard 8.5 and 10mm microduct. It threads through the knockout of Primex in-wall MDE's with minimal effort.

The ruggedized unit can be installed in upward or downward facing positions to manage access to the sealing ring. It's compatible with Primex MDE's: PR1500, P2100, P3000, P4200 and P6300.



Part #	Description
125-1674	Microduct Termination Port for Primex MDE's

VIEW PRODUCT VIDEOS ONLINE AT: WWW.PRIMEX.COM

FOR MORE INFORMATION CONTACT:

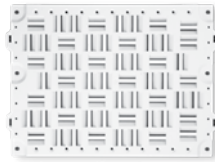
1.604.881.7875 1.604.881.7835

www.primex.com [f](#) [t](#) [in](#) [o](#) [y](#)

UMS
Universal Mounting System

The patented Universal Mounting System (UMS) includes the plate, tape and pushpins, and mounts components and accessories easily in the P2100, P3000, P4200, P6300, and PR1500 Verge Media Distribution Enclosures.

The durable plate snaps into place quickly via the pushpins while the tape secures them in place. Available as individual pieces or as a kit.



Part #	Description
125-0770	Universal Mounting Plate (UMP)
125-0779	33' roll of tape
125-1274	10' roll of tape
125-0829	Pushpins (100/bag)
Kit:	
125-1623	10" UMP w/5' tape, pushpins (x10)

RMS
Rail Mounting System

Patented Rail Mounting System (RMS) includes the plate and brackets. It mounts components and accessories easily in the P2100, P3000, P4200, P6300, and PR1500 Verge Media Distribution Enclosures.

The plate snaps into place via pushpins while the toolless brackets hold components securely. Available as individual pieces or as a kit.



Part #	Description
125-1164	Rail Mounting Plate (7")
125-1165	Rail Mounting Plate (10")
125-1213	6 pack, Rail Mount Bracket
125-1214	6 pack, Dual Rail Mount Bracket
125-1338	Rail Mount Keyhole

For kit information visit: www.primex.com

SMS
Shelf Mounting System

The patented Shelf Mounting System (SMS) extends the mounting functionality of the Verge P2100, P3000, P4200, P6300, and PR1500 Media Distribution Enclosures. It provides 3.5" of mounting depth in the interior of the MDE and holds bulkier and heavier components securely.



It also compartmentalizes service providers for discrete access (Service Divider Kit). Available individually, as a Service Divider pack, or in bulk.

Part #	Description
125-1729	SMS Shelf (single), 2' mounting tape, 10x pushpins
125-1541	SMS Shelf (single), 10x pushpins
125-1542	SMS 'Service Divider' Kit (dual), 10x pushpins
125-1522	125-1522 SMS Shelf (bulk/18), 5' mounting tape, 10x pushpins

RFoG Mounting System
For Optical Network Units

The Primex Verge RFoG (ONU) Mounting System is a compact, secure solution for protecting the RFoG component within a Primex enclosure.

Designed to fit industry-standard RFoG's, the snap lid and screws safely limit access to fiber and coax connections while storing fiber splices and slack.



Part #	Description
125-1413	RFoG (ONU) Mounting System, white
125-1475	RFoG (ONU) Mounting System, grey

Frame Extender
For Verge MDE's

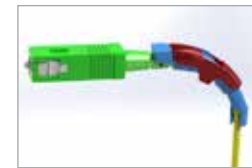
The Verge MDE Frame Extender accessory allows for increased mounting depth inside Primex Media Distribution Enclosures in 1" increments, accommodating oversized equipment including battery backups, Docsis 3.1 modems, etc.



Part #	Description
125-1532	P2100 MDE Frame Extender
125-1533	P3000 MDE Frame Extender
125-1534	P4200 MDE Frame Extender

Fiber Marker Clips
Splitter Identifier Kit

The Primex Fiber Marker Clips provide clear identification and strain relief for splitter sourced fiber within cross-connect cabinets.



Part #	Description
125-1450	Splitter Identifier Kit; 14 colours, cover, label *Available in individual colour quantities.

VIEW PRODUCT VIDEOS ONLINE AT: WWW.PRIMEX.COM

FOR MORE INFORMATION CONTACT:

📞 1.604.881.7875 📠 1.604.881.7835

www.primex.com