

PRIMEX

Product Specifications

P700FSC-THG

Fiber Splice & Connect OSP Enclosure

1. SUMMARY

The Primex Wave P700FSC-THG is a mid-size 12 fiber splice and connect enclosure ideal for riser boxes or small cell deployment.

The integrated Splice Tray and Spider Spool allow for secure connection and management of dual fiber applications.

2. PRODUCT DIMENSIONS

Inside: H 7.6"/W 6.1"/D 2.5"
Outside: H 10.9"/W 8.9"/D 3.3"

3. FEATURES & BENEFITS

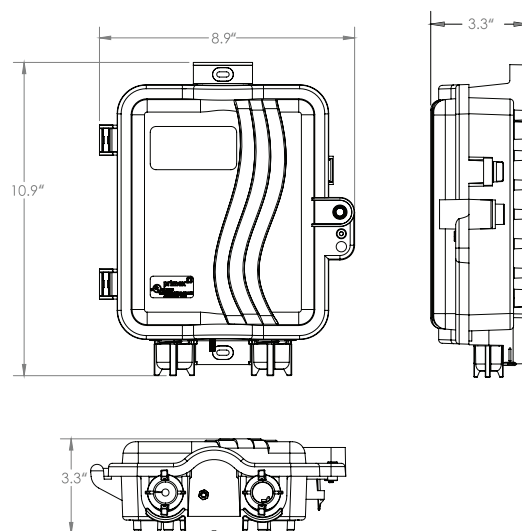
- Small footprint, low profile design with room for up to 12 fiber splices and storage.
- Integrated 12 Fiber Splice Tray for easy fiber implementation.
- Snap lock and hex bolt provide secure service provider access 24/7.
- High quality UV-protected PVC made in North America for long-lasting fiber protection in demanding weather conditions.
- Two robust one-inch ports (with multiports) with grommets for protected fiber entry and exit.
- UL-listed and industry-standardized for easy implementation.

4. APPLICATIONS

- FTTH for multi family units

5. CONFIGURATIONS

Part #	Part Name	Description
125-1793	P700FSC-THG2SA	Hex, splice tray, 4x HClips, 4x CMT, gasket, 2x multiports



FOR MORE INFORMATION CONTACT:

📞 1.604.881.7875 📠 1.604.881.7835

www.primex.com    

primex  **Fit everything. Together.**