

PRIMEX

Product Specifications

Raised Cable Cradle

Bend-Protected Cable Entry

1. PRODUCT SUMMARY

The Primex Raised Cable Cradle securely routes and holds cables within a Wave OSP enclosure. The raised platform provides bend-sensitive entry via the grommet into the enclosure to maintain the integrity of the signal.

Standard cable-ties or Primex mounting tape can be used for affixing cables and it installs quickly and easily with a single screw.

2. PRODUCT DIMENSIONS

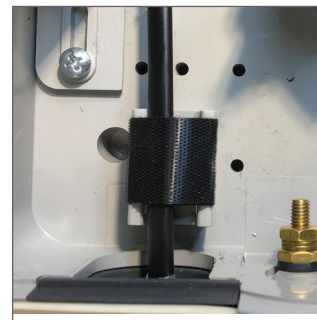
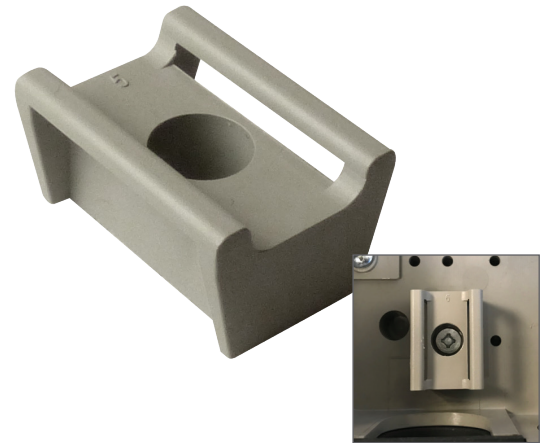
SIZE: For use in Primex Wave OSP enclosures

3. FEATURES & BENEFITS

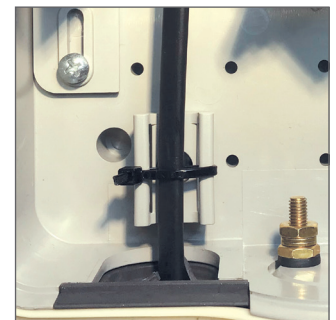
- Easily installs in Primex Wave outside plant enclosures for secure routing and bundling of cables.
- Prevents excessive cable bends at grommet entry to maintain signal integrity.
- Concave cradle to safely protect and route cabling.
- Large tie-down brackets are for use with array of standard cable tie sizes or Primex mounting tape.
- Elevated entry height offers secure, bend-protecting pathway for cabling.
- Cost efficient alternative to bulkier cable cradles.
- High-strength PVC polymer offers long-lasting, secure cable protection.

4. CONFIGURATIONS

125-1826	Raised Cable Cradle & Screw Kit (50/bag)
125-1333	Cable Tie, 4", Black, 50/bag
125-1334	Cable Tie, 4", Natural, 50/bag
125-1335	Cable Tie, 8", Black, 50/bag
125-1336	Cable Tie, 11", Natural, 50/bag
125-1337	Cable Tie, 11", Black, 50/bag
125-0779	33' roll of mounting tape
125-1274	10' roll of mounting tape



Raised Cable Cradle installed with Primex mounting tape.



Raised Cable Cradle installed with cable tie.

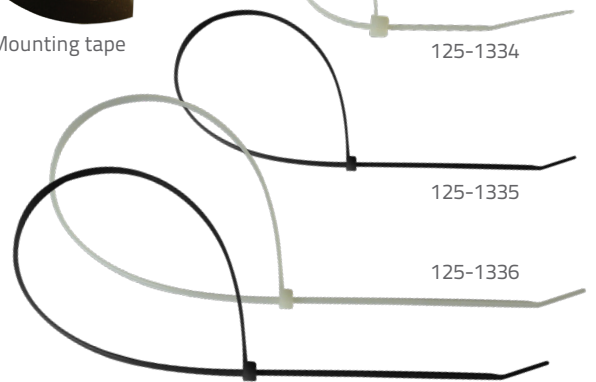


Mounting tape



125-1333

125-1334



125-1335

125-1336

125-1337

FOR MORE INFORMATION CONTACT:

📞 1.604.881.7875 📠 1.604.881.7835

www.primex.com

primex **Fit everything. Together.**