

Triple Play Combo Module

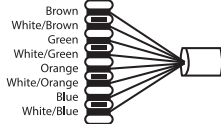
P/N 125-1667

Supports up to 4 data and voice connections and is designed with front 110 punch down termination. Compatible with Cat5e.

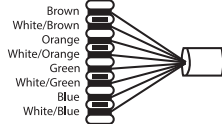
NOTE: Use single wire 110 punch down tool only.

Data Connection Punch Down Options

TIA/EIA 568A



TIA/EIA 568B

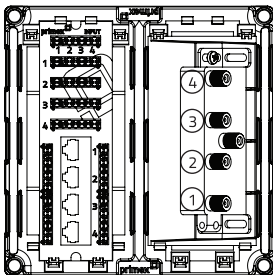


Voice Connections

- 1:
- 2:
- 3:
- 4:

Data Connections

- 1:
- 2:
- 3:
- 4:



Coax Connections

- 1:
- 2:
- 3:
- 4: