

Data/Voice Module
8-Port Cat5e & 8-Port Cat6

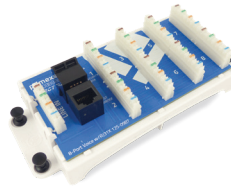
8-port Cat5e & Cat6/6A Data/Voice Modules provide a termination point for simplified cross connect signal distribution from a central location.



Part #	Description
125-0986	8-Port Cat5e Data/Voice Module
125-1035	8-Port Cat6 Data/Voice Module
125-0977	8-Port Cat6 Data/Voice w/RJ45
125-0975	8-Port Cat6A Data Module

Voice Module
8-Port Voice with RJ31X

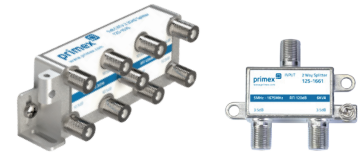
8-port Voice Module offers telephone/fax termination points and an integrated RJ31X or RJ45 jack for emergency line seizure.



Part #	Description
125-0987	8-Port Voice Module w/RJ31x
125-0976	8-Port Voice Module w/RJ45

Coax Splitters
2, 4, 6, 8-Way

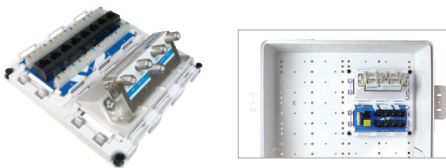
Primex Coax Splitters are purpose-built to meet DOCSIS 3.1 and MOCA 2.5 standards.



Part #	Description
125-1661	2-Way Coax Splitter (horizontal)
125-1574	4-Way Coax Splitter (vert/horiz)
125-1575	6-Way Coax Splitter (vert/horiz)
125-1576	8-Way Coax Splitter (vert/horiz)

Combo Modules
Cat6 & Cat6A

Modular units combine Cat6/6A with Coax and voice on one platform.



Part #	Description
125-1665	8-Port Cat6 & 1X4 Splitter
125-1666	6-Port Cat6A & 1X4 Splitter
125-1667	4-Port Cat6/ 4-Port Voice & 1X4 Splitter
125-1750	1X8 RJ45 & 1X8 Splitter

CPO4
Customer Premise Outlet

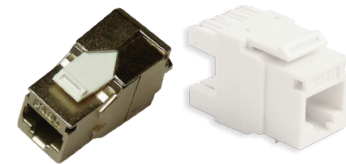
4-port customer premise wall outlet is compatible with Cat5e, Cat6, Cat6a, RJ11, RJ12, standard SC/APC adapters, as well as Primex's Auto Shutter Fiber Jack.



Part #	Description
125-0911	Customer Premise Outlet (4 port)

Cat5e, Cat6, Cat6a Jacks
90° & 180° UTP Keystone

High-performance Cat5e, Cat6, Cat6a 90° UTP keystone jacks fit in standard wall plates suited for high-speed data applications.



Part #	Description
125-0949-WT	Cat5e, 110 IDC, 90° HD
125-0948-WT	Cat5e, 110 IDC, 180° HD
125-0947-WT	Cat6, 110 IDC, 90° HD
125-0946-WT	Cat6, 110 IDC, 180° HD
125-1628-WT	Cat6a, 180° Toolless, unshielded
125-1629-WT	Cat6a, 180° Toolless, shielded

3 Line Voice
RJ12 Voice Keystone

3 Line Voice RJ12 keystone jack fits in standard wall plates and provides easy termination of telephone/fax/alarm.



Part #	Description
125-0959-WT	3-line voice, HD

Fiber Auto-Shutter Jack
Fiber Keystone w/Auto Shutter

Fiber Keystone with Auto Shutter offers easy connectivity for workstation cabling termination on single mode and multimode fiber cables. Closes automatically upon fiber removal.



Part #	Description
125-0908	Fiber Keystone w/shutter

F-Connector
3GHz Keystone Jack

F-Connector 3GHz Keystone jack fits in standard wall and surface mount plates and provides quick and easy coaxial connection.



Part #	Description
125-0961	F-connector 3GHz keystone

VIEW PRODUCT VIDEOS ONLINE AT: WWW.PRIMEX.COM

FOR MORE INFORMATION CONTACT:

1.604.881.7875 1.604.881.7835

www.primex.com [f](#) [t](#) [in](#) [o](#) [y](#)