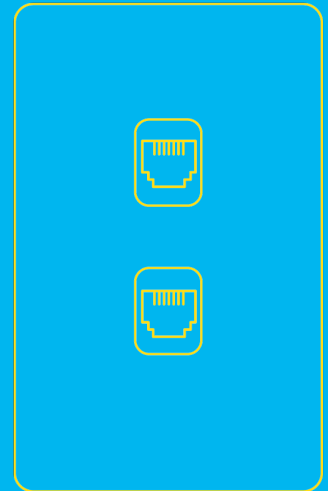


# Primex Accessory Essentials

## CONNECTIVITY PRODUCTS FOR THE FUTURE-READY HOME

Primex offers a range of future-ready accessories to support the modern infrastructure of the connected home. From keystone jacks to voice/data modules, Primex helps meet the connectivity needs of service providers, installers and homebuilders. Smart starts here.

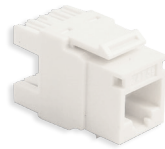


### KEYSTONE JACKS 180, HD



#### Cat6 Jacks

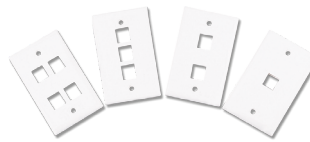
- 125-0946-WT 180°, white
- 125-0946-BL 180°, blue
- 125-0946-RD 180°, red
- 125-0946-YL 180°, yellow



#### Cat5e Jacks

- 125-0948-WT 180°, white
- 125-0948-BL 180°, blue
- 125-0948-RD 180°, red
- 125-0948-YL 180°, yellow

### KEYSTONE WALL PLATES 1-4 PORTS



#### Single-Gang Wall Plates

- 125-0957-WT 1-port, white
- 125-0958-WT 2-port, white
- 125-0955-WT 3-port, white
- 125-0956-WT 4-port, white

### CAT6 PATCH PANELS 12-48 PORTS



#### Cat6 Patch Panels

- 135-0242 12-Port Metal Patch Panel
- 135-0194 24-Port Metal Patch Panel
- 135-0200 48-Port Metal Patch Panel



#### Tool-less Cat6 Jack

- 135-0351 Tool-less Cat6 Jack

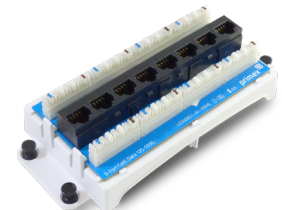
#### Cat6/5e Coupler Jacks

- 125-1267-WT Cat6, white
- 125-1266-WT Cat5e, white

### VOICE/DATA MODULES 8-PORTS



125-0987 Voice Module w/RJ31x



125-1035 Cat6 Data Module



Visit [www.primex.com](http://www.primex.com) to see the full range of connectivity accessories.

For more information contact:  
[salesupport@primex.com](mailto:salesupport@primex.com) | 604.881.7875

SMART  
STARTS  
HERE

primex 