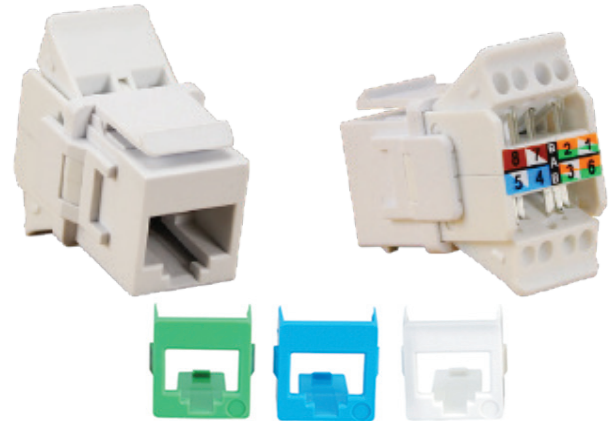


SOHO Pro tool-less Cat6A data jacks provide performance that exceeds TIA/EIA-568-C.2 channel/link and component standards.

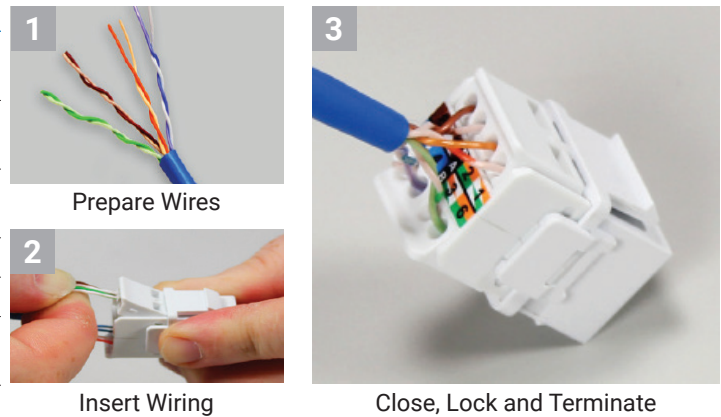
These jacks provide ultra high-speed connections for residential and mixed use applications.

The unique tool-less installation design provides consistent, reliable, and easy wire termination. IDC with tool-less toggle connections aid in maintaining maximum Category 6A performance, providing a tight connection and improved cable retention.

Works with standard keystone and SpeedStar wall plates.



Installation



FEATURES & BENEFITS

- Unique housing design allows mounting in both standard keystone and SpeedStar wall plates.
- Tool-less toggle eliminates individual wire punch-down and provides consistent IDC termination.
- Unique "dual-toggle" design helps preserve wire twist during assembly.
- 568A/B color-coded label for easy wire identification.
- 1 Gigabit performance without punchdown termination.
- Jack installs easily from rear of wall plate or in SOHO Pro 24-Port Blank Patch Panels
- Complies with TIA 1096 (formerly Part 68 of FCC Rules).
- Flame retardant (UL 94V-0).
- Optional assorted SpeedStar color-coded bezels.
- Listed to UL1863 Communications Circuit Assembly.
- No extra parts or trimming required for wire termination.

DIMENSIONS

Fits both standard and SpeedStar wall plates

ORDERING INFORMATION

P/N	Description
135-0358 STAR6000C6AT	Tool-less Cat6A 180° Jack (w/o bezels)
135-0357 STAR6000C6AT3	Tool-less Cat6 180° RJ45 (w/3 bezels: Blue, White, Green)

TECHNICAL SPECIFICATIONS

Material:	High-impact fire-retardant plastic UL94 V-0
Construction:	Spring wire: phosphor bronze alloy plated with 50 micro-inch of gold over 100 micro-inches of nickel
Standards	ANSI/TIA-568-C.2 ISO/IEC 11801 2nd edition EN50173: 2007 IEC 60603-7-51
Term Front Connection Durability:	+750 cycles
Envir. operating temp range:	-10°C to +60°C
PoE Performance:	IEEE 802.3bt Type 4 PoE (90-watt) applications 10GBase-T
Label:	T568A/T568B wiring label
UL/CUL Listed:	Yes

