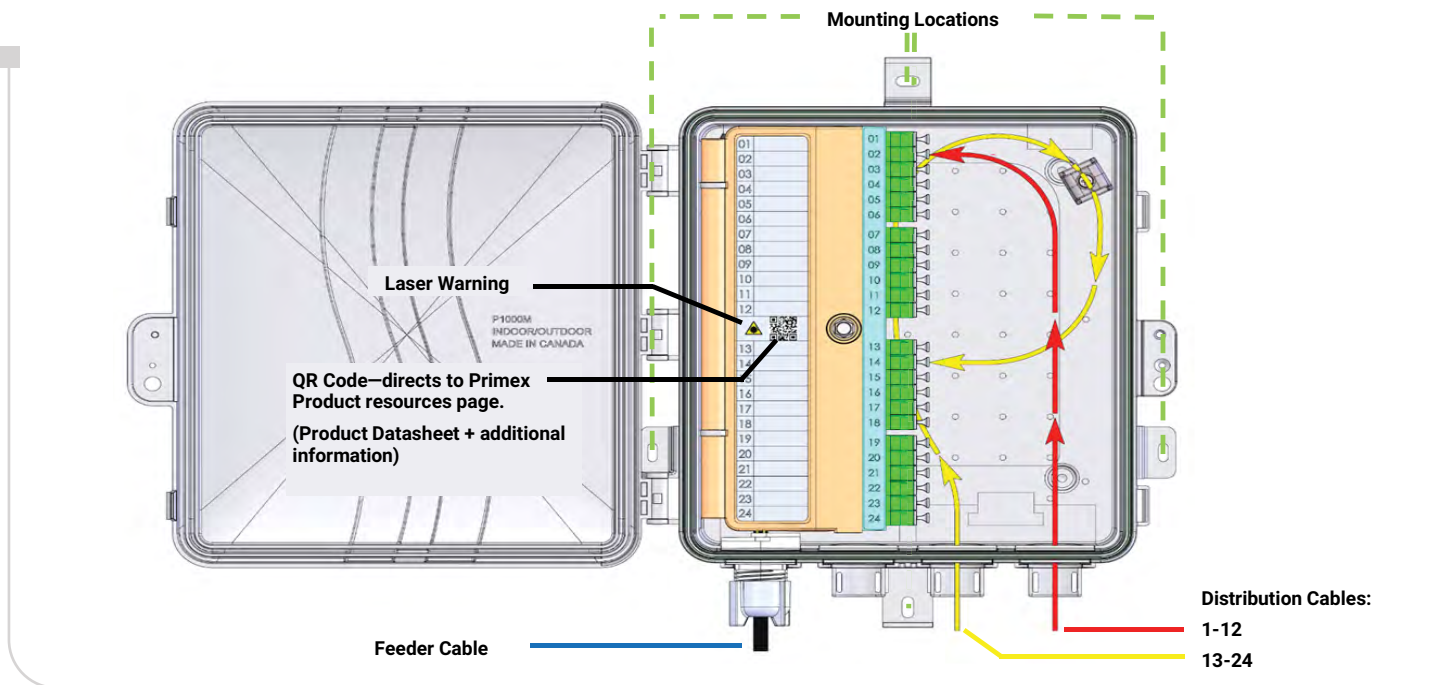


Installation Instructions

Wave™ Fiber 12/24 Connectorized Fiber Terminal (CFT)



1. Installation of Feeder Cable

The length of cable purchased will determine the installation practice suggested.

50', 100' and 225' cables will come coiled and can simply be unrolled. The raw end of the cable can be placed into the duct/pipe or pathway designed for the project and fed to its termination location.

500', 750', and 1000' cables will come packaged on a reel. The solution will be set up on a company approved pay-out apparatus, i.e., cable jacks, wire cart, etc. and then the raw end of the cable can be installed in the designed pathway.

2. Mounting of CFT enclosure

The CFT enclosure has four mounting points for positioning the unit onto a wall or structure. Use appropriate hardware for the surface being mounted to (not provided with the purchase of the unit).

Locate the correct location for mounting the CFT according to the engineers design.

Starting with the top/center mounting hole, attach the CFT to the surface but leave partially loose. Make sure that the CFT is level then attach it to the surface with the other three points of contact. Tighten all four points of contact.

3. Installation of Distribution Cables from CFT

Notice the routing pattern in the diagram where the red line references fiber ports 1-12 and the yellow line references fiber ports 13-24. If only a 12 fiber CFT is being installed, you can ignore the yellow routing line.

Install the fiber drop to the customer location per company standards and best practices.

Make a cut into the correct grommet for the group and install the fiber drop into the CFT. (Twelve 4.8mm drop cables will fit into each of the two grommets designated for distribution.)

Once fiber drop is installed, verify correct port number per engineering.

Per company standards, properly inspect and clean the fiber connector and adapter and then plug the drop cable's connector into the appropriate port. Note, port 1 is at the top of the bulkhead and port 24 is at the bottom.

Repeat this process for all required fiber drops on the distribution side.



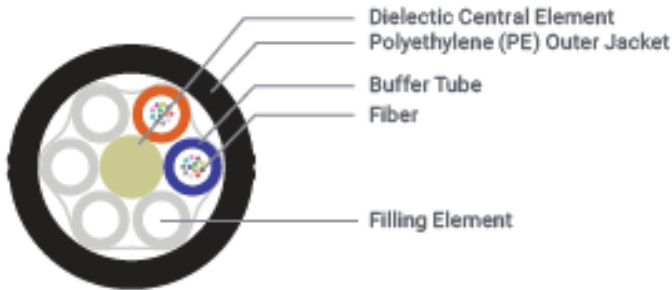
Installation Instructions

Wave™ Fiber 12/24 Connectorized Fiber Terminal (CFT)

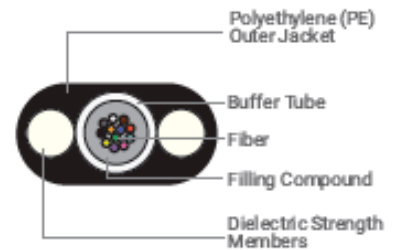
Dimensions

Inside: H 10.2"/W 8.7"/D 2.1" | **Outside:** H 13.9"/W 11.5"/D 3"

Cable Construction



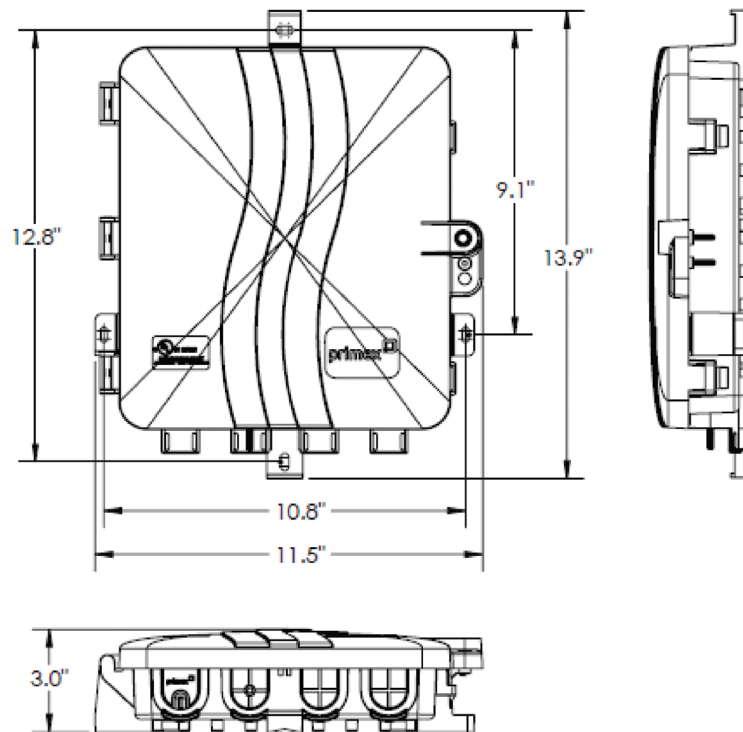
Round Cable* Construction



Flat Cable* Construction

*Typical cable design

Enclosure Dimensions



PAGE 2



www.primex.com | (877) 881-7875 | [in](#) [t](#) [f](#) [@](#) [Primex_Telecom](#)

Primex ©2023 Product specifications are subject to change. 1650723

primex
A CRH COMPANY